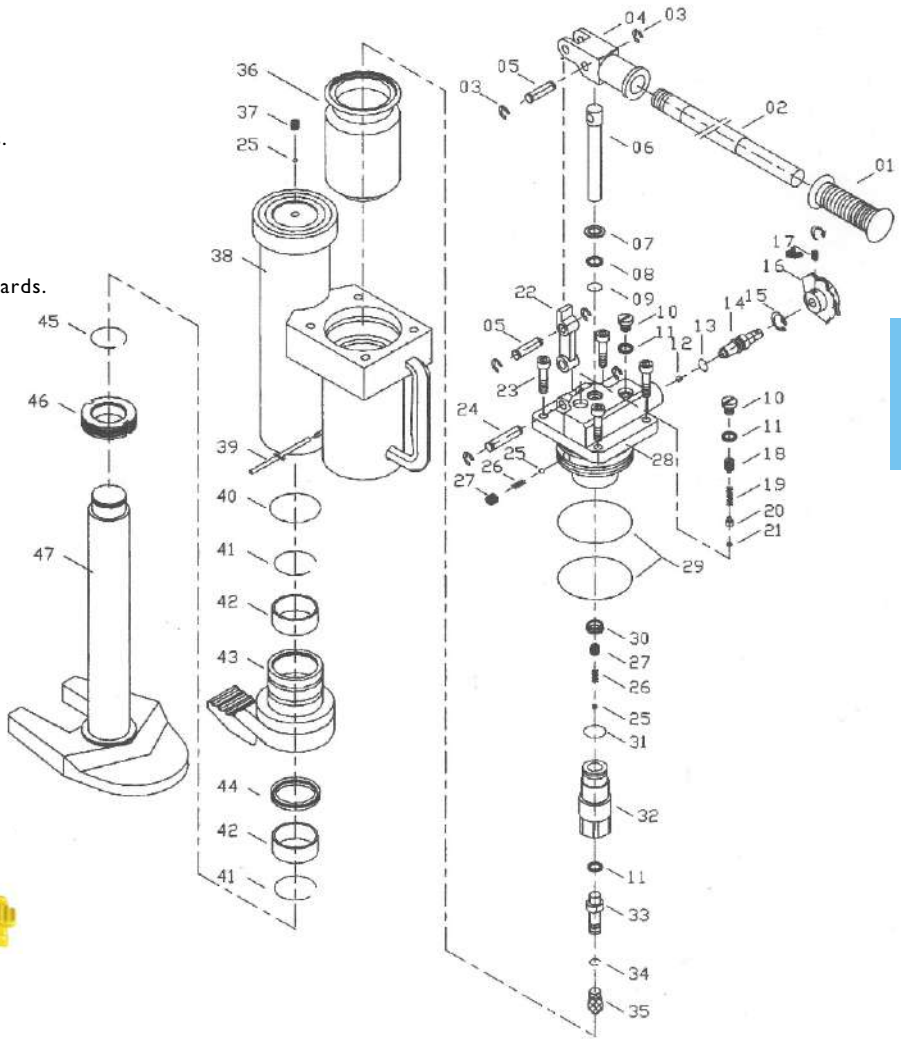


# Model: HTJ

## HYDRAULIC TOE JACK

### Technical Features

- Reliable and durable construction.
- Can be used in any position and at any angles.
- Housing revolves 360 degrees.
- Lowering speed can be accurately adjusted.
- Overload limit protection is built-in.
- Pump lever is removable.
- Meet ANSI/ASME PALD 2009 & CE/GS standards.



ABLE  
TOE JACK



### HTJ HYDRAULIC TOE JACK SPECIFICATIONS

Product Code	Capacity (ton)		Min. Height (mm)		Max. Height (mm)		Max. Lever Force (kg)	Net Wgt (kg)
	Toe	Head	Toe	Head	Toe	Head		
HTJ-05	5	N/A	25	368	230	573	38	25
HTJ-10	10	N/A	30	420	260	650	40	35
HTJ-25	25	N/A	58	505	273	720	40	102

■ Work temperature: -20°C ~ +50°C