

Model: LB-I

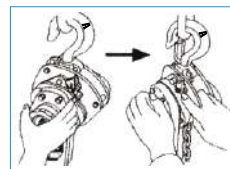
LEVER BLOCK LB-I SERIES

Technical Features

- One touch operation for free chain adjustment
- Grade 80 alloy load chain Iso and Jis standard
- Forged and Heat Treated load Hooks with batch traceability and stretch indicators

Idling operation

- Depress the retaining pawl all the way and pull the grip ring towards you.
- The chain can be adjusted up and down by hand.
- To terminate the idling: Set the change lever in the down position. (See diagram as below). Then, depressing the retaining pawl as far as possible, push the grip ring gently so as to let the pawl engage the outer edge of the retaining plate. Next, grip the grip ring and handle with a single hand and push them while turning them counter-clockwise. The retaining pawl returns to its original position.

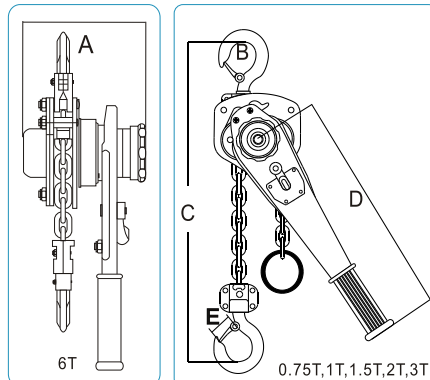


The specifications on this leaflet may be modified for improvement without notice.

Conform & tested acc to EN13157:2004 +A1:2009, ANSI/ASME B30.21, AS1418.2 and SANS 1636.

Product code	Capacity Ton	Standard lift(m)	Test load Ton	Pulling Efforts kg	Chainfall NO .	Load chain Dia(mm)	Dimensions(mm)				Net weight kg	
							A	B	C	D	E	
LB-I 050	0.50	1.5	0.75	11	1	6.3	148	128	295	256	45	6.9
LB-I 075	0.75	1.5	1.13	15	1	6.3	148	128	295	256	45	6.9
LB-I 100	1.00	1.5	1.50	16	1	6.3	152	128	310	256	48	7.0
LB-I 150	1.50	1.5	2.25	18	1	7.1	161	148	335	368	52	9.7
LB-I 200	2.00	1.5	3.00	24	1	8.0	168	148	350	368	60	10.1
LB-I 300	3.00	1.5	4.50	38	1	9.0	191	180	405	368	66	16.1
LB-I 600	6.00	1.5	9.00	39	2	9.0	191	180	550	368	80	26.1

Individually proofload tested with individual serial number



Model: LB-II

LEVER BLOCK LB-II SERIES

Technical Features

- Superior Grade 80 load chain-Wafioslink, Din standard.
- Forged and Heat Treated load Hooks with batch traceability and stretch indicators
- 360° handle rotation with stroke to ratchet indicators
- Double pawl Brake system
- Asbestos free Brake Linings
- Forged Safety Latch
- Sealed Roller Bearings
- 100% Load Tested to 1.5xWLL
- MBL of 400% of WLL

ABLE offers products that are designed for longtime use, providing the lowest possible per-use cost.

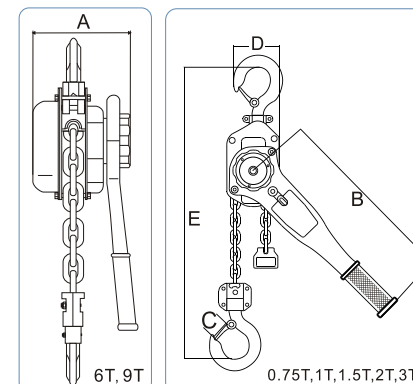


Hoist with the lift in extra lengths is available by extra cost upon request.

Conform & tested acc to EN13157:2004 +A1:2009, ANSI/ASME B30.21, AS1418.2 and SANS 1636.

Product code	Capacity Ton	Standard lift(m)	Test load Ton	Pulling Efforts kg	Chainfall NO .	Load chain Dia(mm)	Dimensions(mm)					Net weight kg
							A	B	C	D	E	
LB-II 050	0.50	1.5	0.75	10	1	6	148	280	45	96	325	6.4
LB-II 075	0.75	1.5	1.13	14	1	6	148	280	45	96	325	6.5
LB-II 100	1.00	1.5	1.50	16	1	6	148	280	48	96	325	6.5
LB-II 150	1.50	1.5	2.25	22	1	8	172	410	52	110	380	11.0
LB-II 200	2.00	1.5	3.00	26	1	8	172	410	60	110	380	11.8
LB-II 300	3.00	1.5	4.50	32	1	10	195	410	66	145	480	18.7
LB-II 600	6.00	1.5	9.00	34	2	10	195	410	80	145	480	29.2
LB-II 900	9.00	1.5	13.5	34	3	10	195	410	94	155	510	41.0

Individually proofload tested with individual serial number



ROTATION CHAIN HOIST

Chain Hoist Revolution

- This innovative and patented hand chain hoist the Ableforge 360 is designed for heavy industrial applications.
 - This 360° rotating hand chain guide allows hoist operations from various angles and helps **the operator stay out of the danger zone.**
 - Premium brake system ensures safe operation, low maintenance and is extremely quiet.
 - Sealed Roller Bearings
- **Strength**
Equipped with hardened load chain for optimum strength, flexibility and long wear life.
 - **Low maintenance**
Enclosed housing allows outdoor use. The load brake requires no lubrication.
 - **Quality features**
 1. Wheel cover with guide slots/guard against jamming and slipping of chain.
 2. Forged swivel hooks and latches prevent twisting of chain and reduce unintentional unhooking of the unit or the load.
 3. Chain guide and stripper ensures proper fit of chain over pocket wheel.
 4. Two-stage gear reduction with hardened gears and pinion.

■ The black for entertainment industry

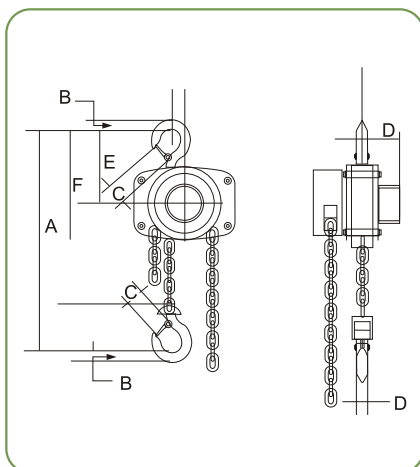
RUD chain can be assembled with extra cost upon request

Product Code	Capacity (Ton)	Lift (M)	Hand Chain Pull to Lift Rated Load (Kg)	Hand Chain Overhauled to Lift Load One Foot (M)	Dimensions (mm)						Net Weight (Kg)
					A	B	C	D	E	F	
CB360-010-025	1	2.5	25.00	14.93	355.6	22.2	28.6	14.3	176	155.6	10.71
CB360-010-030		3.0									11.61
CB360-010-060		6.0									13.51
CB360-020-025	2	2.5	32.00	21.64	395.0	30.0	35.0	20.6	203	182.5	15.33
CB360-020-030		3.0									16.93
CB360-020-060		6.0									20.13
CB360-030-025	3	2.5	35.00	26.51	520.0	38.0	39.7	25.4	224	220.0	20.89
CB360-030-030		3.0									24.39
CB360-030-060		6.0									29.69

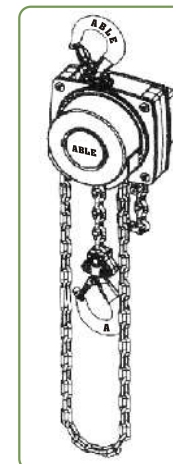


Model: CB360

■ The upfront

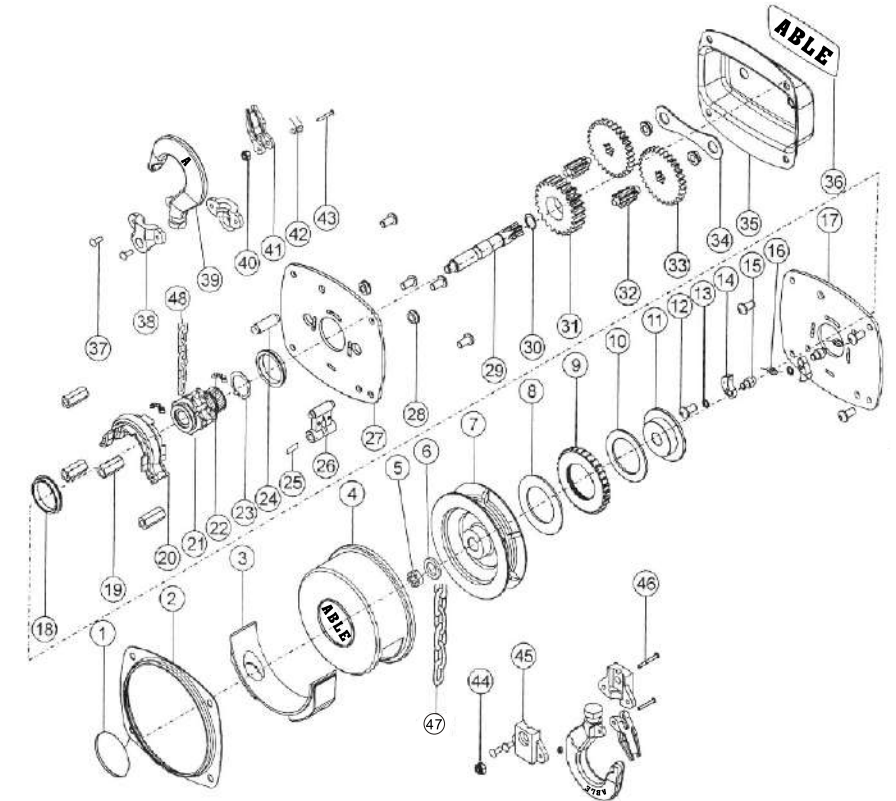


■ The backward



CB360 - NEW CONCEPTION CHAIN HOIST

■ Exploded spare parts drawing



■ CB360 Spare Parts List

No.	Quantity	Description	No.	Quantity	Description	No.	Quantity	Description
1	1	Name plate	17	1	Left side plate assembly	33	21	Disc gear assy
2	1	Chain wheel cover	18	2	Steel bush	34	1	Strengthen plate
3	1	Chain wheel cover ⊕	19	4	Stay pin	35	1	Sheet cover
4	1	Gear cover	20	1	Chain cover	36	1	Name Plate
5	1	Nut	21	1	Load chain sprocket	37	4	Hook rivet
6	1	Washer	22	1	Sealed roller bearing	38	2	Top Hook holder
7	1	hand wheel	23	1	Load chain sprocket	39	2	Hook
8	1	Friction Plate ⊕	24	1	Tophook shaft	40	2	Nut
9	1	Ratchet Disc	25	1	Sling plate pin	41	2	Safety Latch
10	1	Friction Plate ⊕	26	1	Sling plate	42	2	Spring
11	1	Brake seat	27	1	Right side plate assy	43	2	Screw
12	8	Pin nut	28	4	Bearing race	44	1	Nut
13	2	Spring washer	29	1	Driving shaft	45	2	Bottom hook holder
14	2	Pawl	30	1	Spring washer	46	1	Bottom hook pin
15	2	Pawl pin	31	1	Splined gear	47	1	Hand chain
16	2	Pawl spring	32	2	Pinion shaft	48	1	Load chain



Model: CB-I

CHAIN BLOCK CB-I SERIES

Technical Benefits

- High-tech load chains are approved by DIN 5684, one of the world's most rigid standards. This is the special heat treated load chain of ISO Grade T (900N/mm²) whose tensile strength far surpasses ISO T class.
- Double pawls supporting fail-safe brake mechanism. Even if by any chance one of the two pawls becomes unserviceable, the other will still remain operative, and the brake system remains secure.
- Hooks of easier handling shape. The opening of the hooks has been made wider for easier handling and working. However if by any chance the hook is overloaded there is no fear of it breaking, it will simply gradually start straightening out, avoiding any load drop or personal injury.
- Tough framing. The tough gear case, reinforced with four ribs and four knock pins, provides accurate gear centering and high mechanical efficiency.
- Rolled-edge hand wheel cover. This provides smooth operation of the hand chain when pulled side ways. Strong and least corrosive electrostatic powder painting.
- Wet friction discs with longer life.
- Load sheave with sealed roller bearing.
- Anchor plate avoiding overlowering.



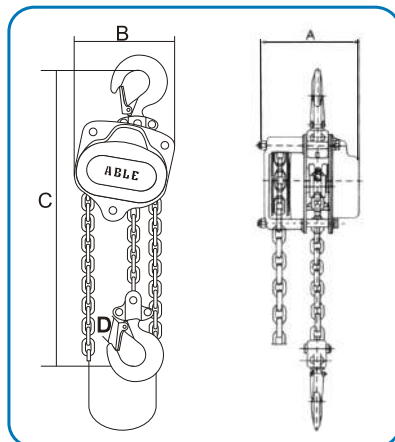
Sealed roller bearings inside

Hoist with the lift in extra lengths is available by extra cost upon request.

Conform & tested acc to EN 13157:2004 +A1:2009, ANSI/ASME B30.21, AS1418.2 and SANS 1636.

Product code	Capacity Ton	Standard lift(m)	Test load Ton	Pulling Efforts kg	Chainfall NO .	Load chain Dia(mm)	Dimensions(mm)				Net weight kg
							A	B	C	D	
CB-I 005	0.5	3.0	0.75	16	1	5.0	127	144	285	27	9.0
CB-I 010	1.0	3.0	1.50	24	1	6.3	147	157	315	30	11.9
CB-I 015	1.5	3.0	2.25	28	1	7.1	179	174	340	34	14.2
CB-I 020	2.0	3.0	3.00	32	1	8.0	179	204	380	37	20.2
CB-I 030	3.0	3.0	4.50	32	2	7.1	179	206	475	43	20.77
CB-I 050	5.0	3.0	7.50	36	2	9.0	179	263	635	46	37.26
CB-I 100	10.0	3.0	12.50	38	4	9.0	179	367	760	67	61.20
CB-I 150	15.0	5.0	18.75	38×2	6	9.0	207	754	850	84	122.48
CB-I 200	20.0	5.0	25.00	38×2	8	9.0	207	873	870	96	175.35

Individually proofload tested with individual serial number



Model: CB-II

CHAIN BLOCK CB-II SERIES

Technical Benefits

- Superior Grade 80 load chain -Din standard. MBL is 400% of WLL, Elongation ≥10%.
- Forged and Heat Treated load Hooks with ABLE mark and stretch indicators
- Double Pawls supporting fail-safe brake mechanism. Even if by any chance one of the two pawls becomes unserviceable, the other will still remain operative, and the brake system remains secure.
- Asbestos free Brake Linings
- Individually proofload tested to 1.5×WLL with individual serial number
- Low maintenance. Enclosed housing allows outdoor use. The load brake requires no lubrication.
- Quality features
 - Wheel cover with guide slots guards against jamming and slipping of chain.
 - Forged swivel hooks with latches prevent twisting of chain and reduce unintentional unhooking of the unit or the load.
 - Chain guide and stripper ensure proper fit of chain over pocket wheel.
 - Two-stage gear reduction with hardened gears and pinion.



Chrome finish also available



Moving Products from one Place to another



Laying conduits and pipelines



Uprooting trees

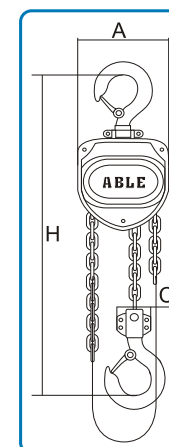
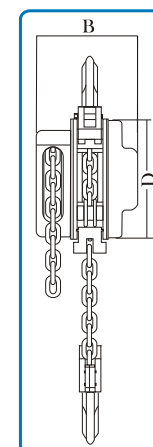


Installing underwater pump

Hoist with the lift in extra lengths is available by extra cost upon request.

Product code	Capacity Ton	Standard lift(m)	Test load Ton	Pulling Efforts kg	Chainfall NO .	Load chain Dia(mm)	Dimensions(mm)					Net weight kg
							A	B	C	D	H	
CB-II 005	0.5	3.0	0.75	22	1	6	125	111	24	134	320	8.9
CB-II 010	1.0	3.0	1.50	31	1	6	147	126	28	154	350	11.4
CB-II 015	1.5	3.0	2.25	35	1	8	183	141	34	192	430	16.9
CB-II 020	2.0	3.0	3.00	30	1	8	215	163	38	224	430	17.2
CB-II 020A	2.0	3.0	3.00	31	2	6	147	126	40	154	455	14.8
CB-II 030	3.0	3.0	4.50	35	2	8	183	141	38	192	550	24.5
CB-II 050	5.0	3.0	7.50	39	2	10	215	163	48	224	660	38.8
CB-II 075	7.5	3.0	11.25	41	3	10	340	163	48	224	700	54.0
CB-II 100	10.0	3.0	12.50	41	4	10	360	163	64	224	720	84.0
CB-II 200	20.0	5.0	25.00	41×2	8	10	585	191	82	224	1000	185.0
CB-II 300	30.0	5.0	37.50	47×2	12	10	705	485	75	85	1380	263.4

Conform & tested acc to EN 13157:2004 +A1:2009, ANSI/ASME B30.21, AS1418.2 and SANS 1636.





Model: CB250

MINI CHAIN BLOCK

Technical Benefits

- CB 250 Chain Block is an efficient and versatile lifting tool, which is capable of being widely applied in factory, power plants, laboratory, transport and the home for installing machines, repairing, lifting goods and dragging and securing loads etc. It is particularly used in the narrow places, overhead working and in the open air, stretching at the various angles with superior advantages.
- Superior Grade 100 load chain - Wafios link
- Forged and Heat Treated load Hooks with batch traceability and stretch indicators
- Double Pawl brake system
- Asbestos free Brake Linings
- 100% Load Tested to 1.5 XWLL
- Sealed Roller Bearings
- 2000 Cycle Batch Test
- MBL of 400% of WLL



Moving Products from one Place to another



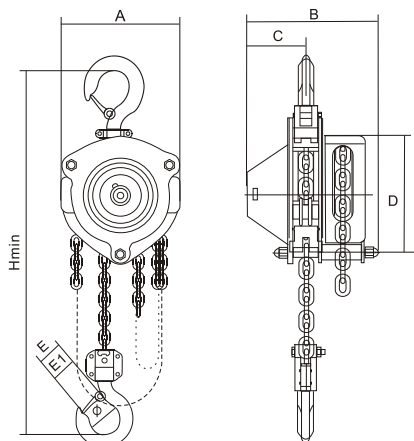
Laying conduits and pipelines



Uprooting trees



Installing underwater pump



MINI CHAIN BLOCK SPECIFICATION

Product code	Capacity (kg)	Standard lift (m)	Test load (kg)	Headroom Hmin (mm)	Pulling Efforts (kg)	Load chain Dia × pitch (mm)	Chainfall NO.	Net weight kg
CB250	250	3.0	375	230	11.6	φ 4 × 12	1	6.0

Dimensions (mm)

Product code	A (mm)	B (mm)	C (mm)	D (mm)	E (mm)	E ₁ (mm)	Hand chain Dia × pitch (mm)
CB250	100	110	48.5	109	18	15.5	2.7 × 14.5



Model: LB250

MINI LEVER HOIST

Technical Features

- LB 250 Lever Hoist is an efficient and versatile lifting tool, which is capable of being widely used in factory, power plants, communication, laboratory, transport and the home for installing machines, lifting goods, dragging loads and tightening goods etc.
- Superior Grade 100 load chain - chrome plated
- Forged and Heat Treated load Hooks with batch traceability and stretch indicators
- Double Pawl brake system
- Asbestos free Brake Linings
- 100% Load Tested to 1.5 XWLL
- Sealed Roller Bearings
- 2000 Cycle Batch Test
- MBL of 400% of WLL

Easy to attach Hook

The hook is locked into position, and can even be attached with just one hand.

One-Touch Adjustment

Chain length can be adjusted by simply setting the switching lever to the center (N) position.



Lifting



Lowering



Fastening



Pulling

MINI LEVER HOIST SPECIFICATION

Product code	Capacity (kg)	Standard lift (m)	Test load (kg)	Headroom Hmin (mm)	Pulling Efforts (kg)	Load chain Dia × pitch (mm)	Chainfall NO.	Net weight kg
LB250	250	1.5	375	215	12.5	φ 4 × 12	1	2.15

Dimensions (mm)

Product code	A (mm)	B (mm)	C (mm)	D (mm)	E (mm)	E ₁ (mm)
LB250	75	116	41	157	18	15.5



Easy Grip Handle

The handle shape is designed to not spread apart while being used, one-touch system keeps rainwater out to ensure long lever life.

Completely Sealed Brake Section

For added safety, the brake section is completely sealed, protecting the brake pawl and brake plate from damage from foreign objects.

Sealed Body

A sealed body means steady chain gripping, and a body that keeps out rain water, provides smooth operation, and is easy to handle.